

Upcoming Projects

Strathcona County

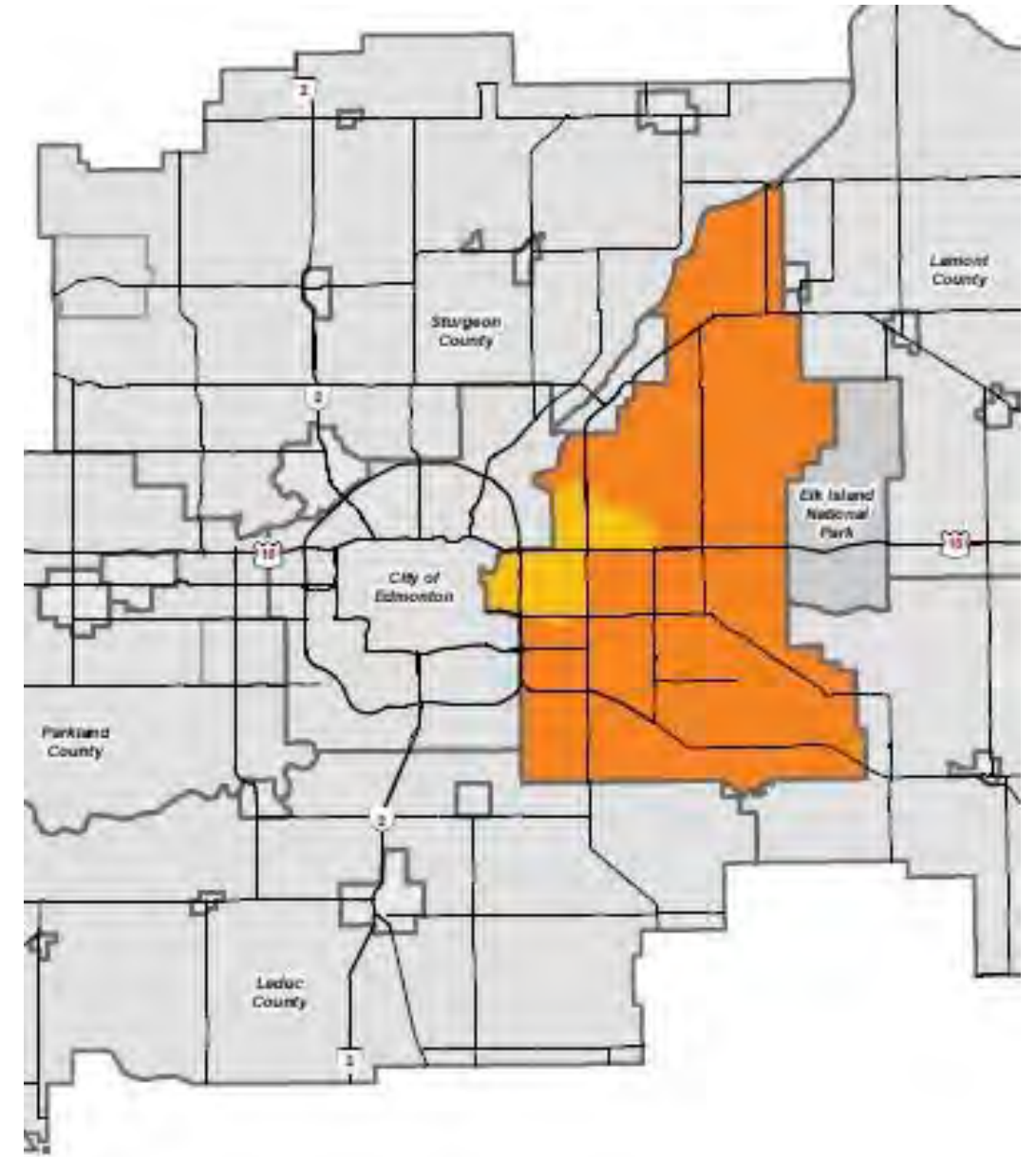
CEA Partnering with Industry Symposium
January 2023

Introduction

Relevant departments:

- Transportation Engineering and Operations (TEO)
 - planning studies
 - transportation design projects
 - roadway upgrades or new growth projects
 - maintenance and rehab of transportation infrastructure
- Utilities
 - sanitary, water
- Recreation, Parks and Culture
- Fleet and Facility Management
- Economic Development and Tourism

For more information: [Strathcona.ca](https://www.strathcona.ca)



Approved Capital Plan

Transportation Engineering and Operations

Annual programs:

- Annual Missing Links Sidewalks
- Annual Bridge Replacement
- Traffic and Pedestrian Safety
- Traffic Signal and Intersection Improvement
- Annual Rehabilitation Programs

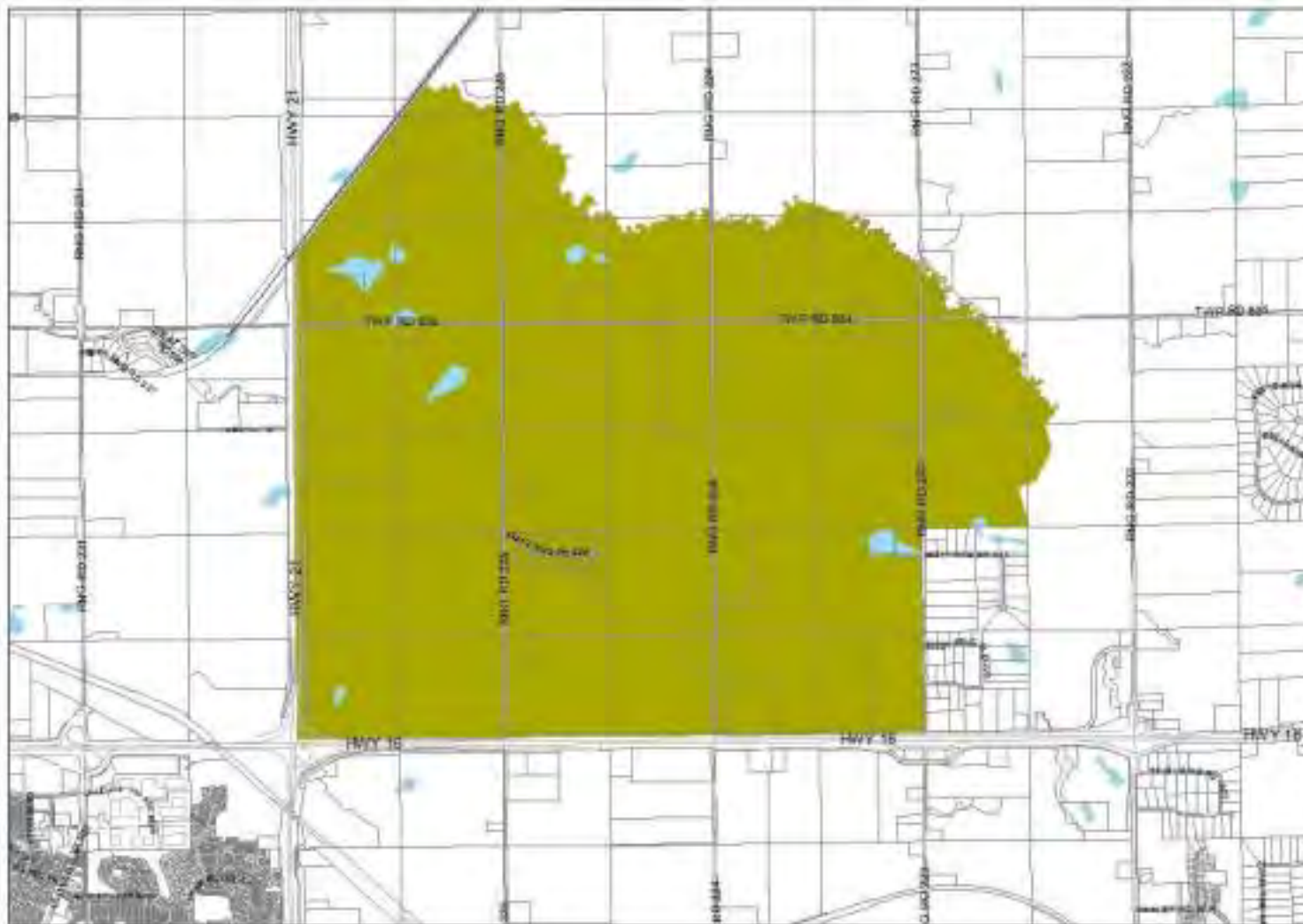
2023:

- Hwy. 16 and Bremner access design plan
- Design – Rge. Rd. 231, Wye Rd. to Hillshire Blvd.
- Design – Sherwood Drive Roundabout
- Design – Rge. Rd. 232, Wye Rd. to Estate Drive
- Land – Rge. Rd. 233, Ash Street to Balmoral Way
- Materials Testing and Geotechnical Services RFP



Hwy. 16 and Bremner access plan

Transportation Engineering and Operations



- Align with Bremner ACP
- Acquire AT acceptance

Approved Capital Plan – Design RFPs

Transportation Engineering and Operations

Design, land, and utilities –
Range Road 231, Wye Road to Hillshire Boulevard

- incorporate roundabout and other upgrades required for the adjacent Hillshire Development
- design to stem from relevant completed functional planning studies and adjacent designs

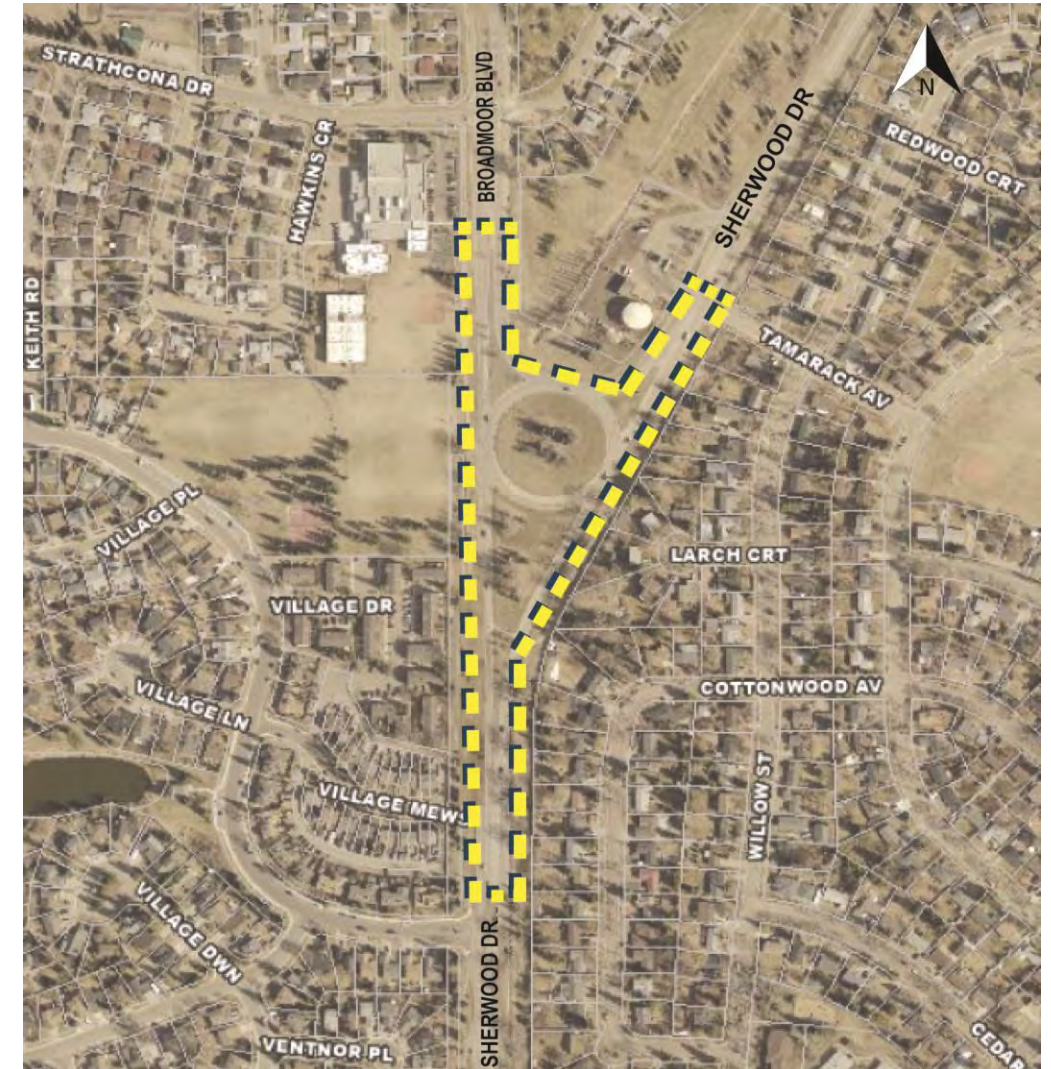


Approved Capital Plan – Design RFPs

Transportation Engineering and Operations

Design, land, and utilities –
Sherwood Drive and Broadmoor Boulevard
Roundabout

- convert the traffic circle to current roundabout standards
- address safety issues, in 2019 report was the third highest locations for collisions
- review and incorporate pedestrian connectivity
- connect to recent improvements and rehabilitation works to north and south



Approved Capital Plan – Design RFPs

Transportation Engineering and Operations

Design, land, and utilities –
Range Road 232, Wye Road to Estate Drive

- design currently awaiting developer-led work pertaining to the parcel west of Range Road 232
- capital funding to cover required County-funded elements



Approved 5-Year Capital Plan

Transportation Engineering and Operations

- 2024: (Tentative)
 - Hwy. 15/Hwy. 830/Rge. Rd. 214 Interchange Study
 - construction - Sherwood Drive/Granada Blvd. Intersection Improvements
- 2025: (Tentative)
 - construction - Sherwood Drive Roundabout
- 2026: (Tentative)
 - design – Twp. Rd. 530 and Rge. Rd. 222 Intersection Improvements
 - construction – Rge. Rd. 233, Ash Street to Balmoral Way
- 2027: (Tentative)
 - construction – Rge. Rd. 232, Wye Road to Estate Drive
 - construction – Rge. Rd. 231, Wye Road to Hillshire Boulevard

Annual Rehabilitation Programs

Transportation Engineering and Operations

Annual rehabilitation programs:

- Rural Roads program
- Urban Roads program
- Asphalt Trails program
- Gravel Roads program
- Parking Lots program

Future RFP (late 2023, contract starting in 2024)

- Standing Offer Agreement – Consulting Services for Annual rehabilitation programs

Other Projects - Construction

Transportation Engineering and Operations

- 2023 roadway improvements – currently ongoing:
 - grade separation construction – Rge. Rd. 231, Highway 16 to north of CN tracks
 - arterial upgrades, designed by Stantec, are in support of North of Yellowhead area Cambrian Crossing developments ongoing by Rohit and Mattamy
 - Rural Road upgrade construction – Rge. Rd. 210, Twp. Rd. 550 to Highway 15
- 2023 upgrade projects (new):
 - Twp. Rd. 534 & Highway 21 Signalized Intersection Improvements construction
 - Centre in the Park – Prairie Walk replacement

For more information: strathcona.ca/transportation-roads/

Capital Projects

Fleet and Facility Management

- Projects approved:
 - Pointe Aux Pins Agriculture Facility – Building is currently out for Design Build proposals. Site works and Utilities is under design with tender spring 2023
 - Strathcona Public Services Yard, Facility Expansion – construction of Shop completed. Renovation and extension of main building underway. Complete Q2 2024
 - Annual Facility Lifecycle Program – work released throughout 2023
 - Energy Improvement Projects (various locations) - work throughout 2023
 - Community Centre Lighting System Upgrade – design and construction phase in 2023
 - Hydrogen Fuel Bus Storage Building – construction 2023
 - BMS Modernization RPC Admin & Transit Bus Barns Building – Upgrade BMS systems in each facility to current standards
 - Colchester Community Hall Barrier Free Accessibility Updates
- 2023-2026 tentative capital projects:
 - Hydrogen Feasibility study for Transit Facilities
 - Fire Station 7 Planning

Projects

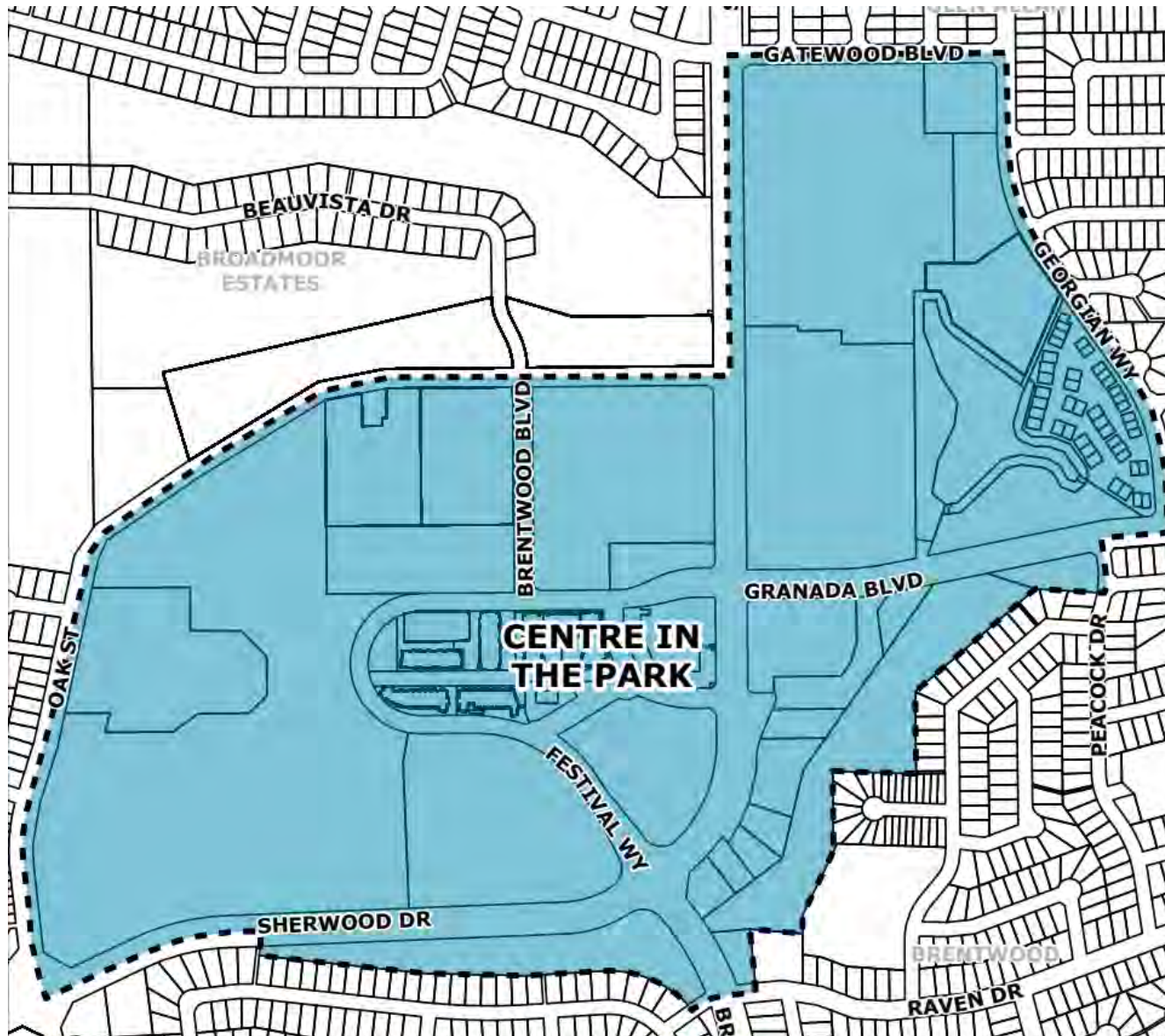
Recreation, Parks and Culture

Projects vary:

- Design and construction of new trails, landscaping, and gathering spaces (park infrastructure and amenities)
 - Broadmoor tennis courts and Emerald Hills basketball court - construction
 - County Hall south plaza landscape revitalization - construction
 - Various trails construction, some designs under existing design contract
 - Design and construction of Rainbow Park and Abbey Park Gazebos
 - South Cooking Lake multi-sport court; picnic shelter and firepit
- Examples of past projects:
 - paved trail connections in urban fringe areas
 - new trails with River Valley Alliance and Trans Canada Trails
 - McPherson Park spray deck design-build project
 - Deermound dog off-leash park parking lot expansion

Project management by Transportation Engineering and Operations department

Utilities

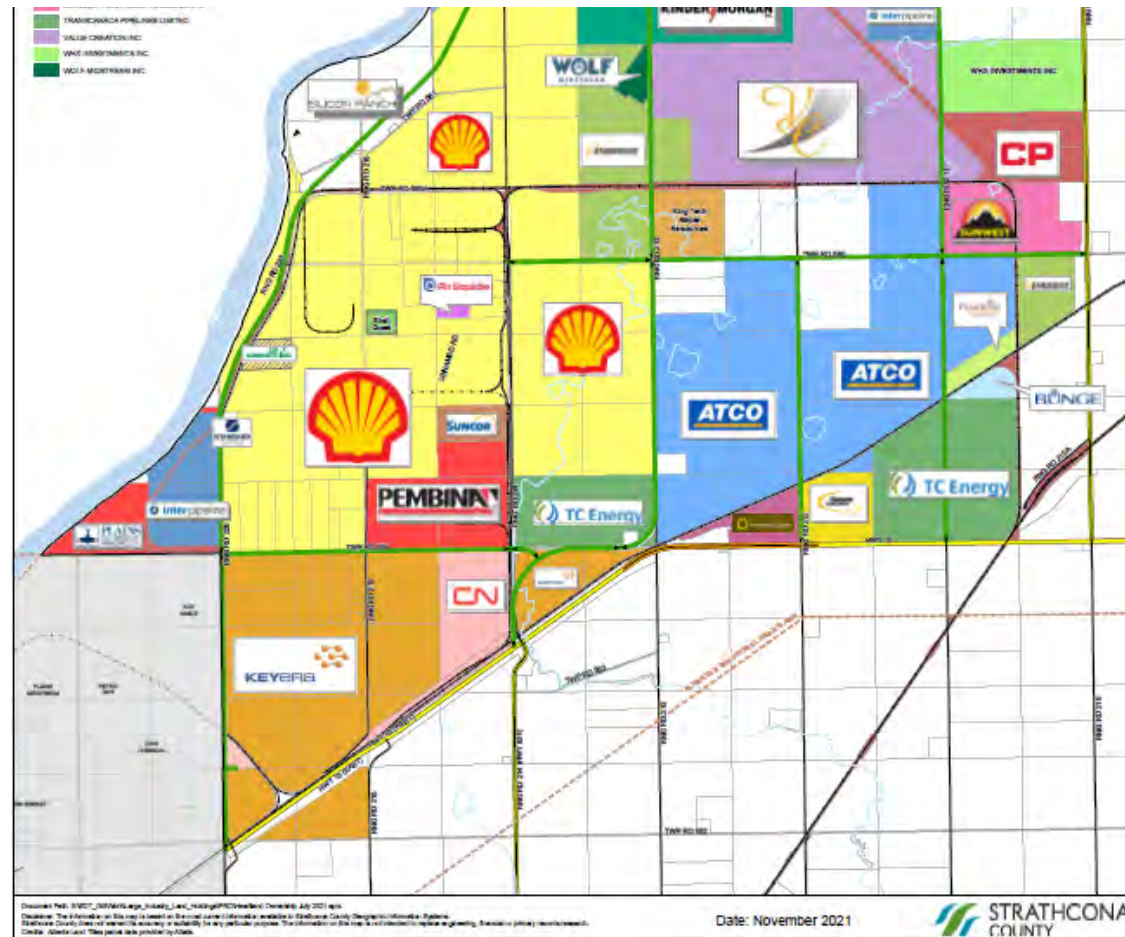


- Centre in the Park Wastewater Upgrade Design (2023)
- Sherwood Park Stormwater Model Update (2023)
- Annual rehabilitation programs:
 - Infrastructure renewal

Economic Development & Tourism Impacts

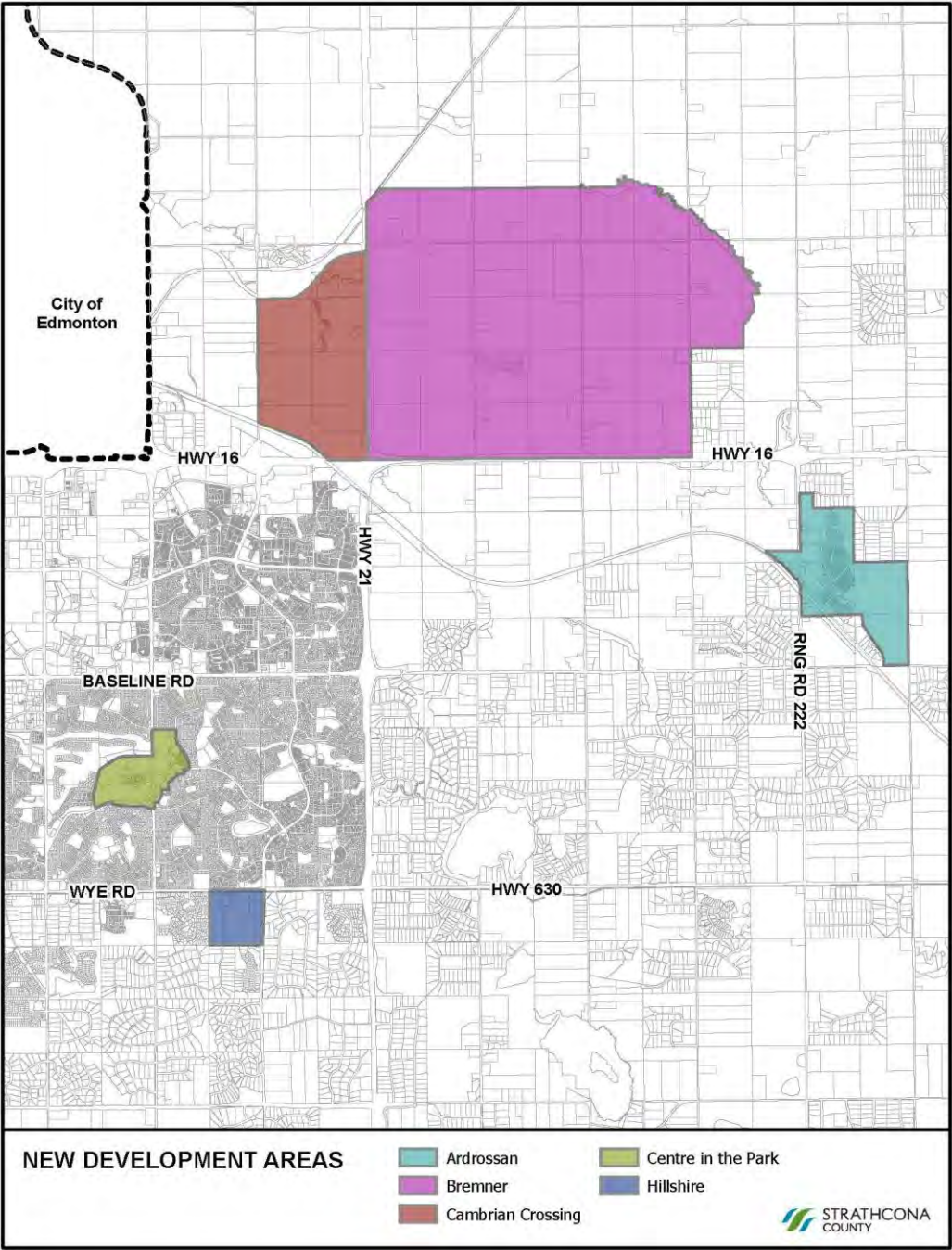
- Supportive of capital project investments in Heartland area, including the interchange improvements at Highways 15 and 830 (roads and related infrastructure are key for future industrial growth and petrochemical investments).
- Road improvements adjacent to the greenfield residential development in Hillshire are key to diversifying housing product in Sherwood Park and **improving Strathcona County's competitiveness in the region.**
- Capital investments for the Multi-Purpose Agriculture Facility and Indoor Fieldhouse are tied directly to economic diversification i.e., support for key investment focus areas such as Agriculture and Tourism.

Heartland Industrial Area



- Alberta's Industrial Heartland Area (AIHA)
 - <https://industrialheartland.com/>
 - <https://www.strathcona.ca/business-and-development/development/albertas-industrial-heartland/>
- Shell's 58 MegaWatt solar farm adjacent to Scotford Refinery
- Significant research on Hydrogen in the area
 - Shell Canada and Mitsubishi Corporation announced plans to collaborate on a hydrogen facility
 - Province released Hydrogen Roadmap
- Improvements to the transportation network

New Development Areas



Questions?



Garry Johnston, P.Eng.
Transportation Engineering and Operations, Strathcona County
garry.johnston@strathcona.ca